

Smart Intercom

Catalogue



Award Winning Design

The Fusion of Aesthetics
and Technology



Disclaimer: All trademarks, logos and brand names are the property of their respective companies or their affiliates.



Akuvox S539

10" Android Door Phone

- 10" fully-color touch display provides ultra-wide viewing angles
- IP66 & IK08
- 120° wide-angle 5MP starlight and HDR camera
- A dedicated QR camera for QR code scanning
- Customizable motion detection zone
- Face verification accuracy >99%, face comparison speed <0.2s per person, false recognition rate <0.1%
- Multiple verification methods including: facial recognition, NFC, 13.56MHz and 125kHz access cards, Bluetooth, and QR code
- Support ingenious and ergonomic screw-driving method for installation



Akuvox S535

5" Facial Recognition Door Phone

- Aluminum panel with 5" touchscreen
- IP66 & IK08
- 2MP camera with wide angles of 116°(H), 62°(V)
- Multi-way access feature including: face, PIN, NFC, 13.56MHz/125kHz access cards, BLE & QR code
- Support expandable module: LTE or fingerprint or induction loop
- Flush-mounted & surface-mounted
- Comply with SIP & ONVIF



Akuvox S532

SIP Video Door Phone with A Seamless Fusion of Analog and IP Technologies

- Vandal-resistant body, with numeric keypad
- IP66 / IK08
- 2MP camera with wide angles of 130°(H), 90°(V)
- Smart motion detection with precision alerting
- Support multiple access control methods: PIN, NFC, 13.56MHz/125kHz access cards, and BLE
- Built-in induction loop module (optional)
- Ability to work with analog intercom systems
- Working Temperature: -40°C ~ +60°C
- Flush-mounted & surface-mounted



Akuvox X916S

World's First Android Door Phone with Starlight Camera

- 13" capacitive touch screen
- 316-grade stainless steel panel
- Dual-camera
- Dual-microphone for noise reduction
- Support multiple access control methods: facial recognition, NFC, 13.56MHz and 125kHz access cards, Bluetooth, and QR code



Akuvox X915S

Facial Recognition Android Door Phone

- 8" full-color touch display provides ultra-wide viewing angles
- Visible light facial recognition
- Anti-spoofing algorithm against photos and videos
- 5MP primary camera features a built-in HDR mode to tackle a variety of high-contrast scenes
- Fully compliant with the IK10 & IP66
- Support multiple verification methods, including the face, card, PIN, Bluetooth, and QR code
- Built-in HID® Proximity or iClass® Module (optional)
- Ability to integrate with an induction loop antenna for users with hearing aids
- Multiple theme options available to personalize and suit a range of locations
- Cold-resistant (-40°C~+60°C)



Akuvox X912S

Vandal-resistant Door Phone for High-end Buildings

- 4" full-color touchscreen & keypad
- Slim design for limited installation space
- Vandal-resistant body, fully compliant with the IK10 rating
- Two-way audio communication over IP networks with echo cancellation feature
- Multi-way access feature including face, cards, PIN, BLE & QR codes
- Flush-mounted & surface-mounted
- Comply with SIP & ONVIF



Akuvox X912K

Vandal-resistant Door Phone for High-end Buildings

- 4" full-color touchscreen & physical keypad
- Slim design for limited installation space
- Vandal-resistant body, fully compliant with the IK08 rating
- Two-way audio communication over IP networks with echo cancellation feature
- Multi-way access feature including face, cards, PIN, BLE & QR codes
- Flush-mounted & surface-mounted
- Comply with SIP & ONVIF



Akuvox X910S

Single-Button Package Detection Door Phone

- 5MP camera with 2K resolution and WDR feature
- 150°(H) / 116°(V) expanded view angle for visibility
- Auxiliary camera for package detection
- Support multiple verification methods: 13.56MHz access cards, NFC, BLE, and QR codes
- Two-way audio communication over IP networks with echo cancellation feature
- Comply with SIP and ONVIF
- Surface-mounted
- IP66 & IK08 rating for outdoor environments
- Working temperature -40°C~+55°C



Akuvox R29C

Facial Recognition Android Door Phone

- 7" capacitive touch screen supporting glove mode
- Aluminum panel
- Dual-camera: one 120° wide-angle 3MP camera with IR and an auxiliary 1MP camera
- Support multiple access control methods: facial recognition, NFC, 13.56MHz and 125kHz access cards, Bluetooth, and QR code
- Cold-resistant version (-40°C to 55°C) available
- Support plasterboard installation
- Black color version available



Akuvox R29C-L

Facial Recognition Android Door Phone with 4G Technology

- 7" capacitive touch screen supporting glove mode
- Aluminum panel
- Dual-camera: one 120° wide-angle 3MP camera with IR and an auxiliary 1MP camera
- Support multiple access control methods: facial recognition, NFC, 13.56MHz and 125kHz access cards
- LTE wireless communication requires the minimum efforts for device installation
- On-wall mounting only



Akuvox R28A

SIP Video Door Phone with Numeric Keypad

- 4.3" color TFT LCD
- Premium audio and video quality
- Aluminum panel
- 116° wide-angle 2MP camera with automatic lighting
- Support multiple access control methods: NFC, 13.56MHz and 125kHz access cards
- Built-in induction loop module (optional)
- Cold-resistant (-40°C to 55°C)



Akuvox R25K

Ultra Wide-angle Video Door Phone

- Premium audio and video quality
- 150° wide-angle 4MP camera with automatic lighting
- Support 13.56MHz, 125kHz and NFC access cards
- Ideal for environments with limited space



Akuvox R20K

Compact SIP Video Door Phone with Numeric Keypad

- Premium audio and video quality
- 110° wide-angle 2MP camera with automatic lighting
- Support NFC, 13.56MHz and 125kHz access cards
- Ideal for environments with limited space



Akuvox R20K-L

Compact LTE Video Door Phone

- Premium audio and video quality
- 110° wide-angle 2MP camera with automatic lighting
- Support NFC and 13.56MHz access cards
- Support LTE connection
- Ideal for environments with limited space



Akuvox R20B

Compact SIP Video Door Phone

- Five call buttons with nameplates
- Wide-angle camera: 110° (H), 58° (V)
- Two-way audio communication over IP networks with Echo Cancellation feature
- Comply with SIP standard for easy integration with SIP-capable PBXes
- Comply with ONVIF standard for easy integration with any network surveillance system



Akuvox MD12

Video Intercom Nametag Module

- Nametag module compatible with R20K/R20B
- Twelve call buttons with nametags for easy calling
- IP65
- Backlight compensation behind the nametag buttons
- User-friendly and expandable
- In-wall installation



Akuvox MD06

Video Intercom Nametag Module

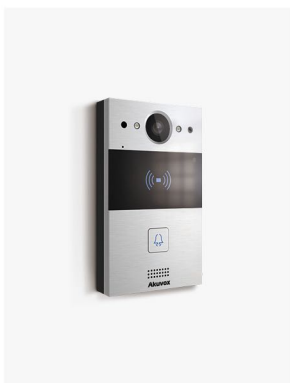
- Nametag module compatible with R20K/R20B
- Six call buttons with nametags for easy calling
- IP65
- Backlight compensation behind the nametag buttons
- User-friendly and expandable
- In-wall installation



Akuvox R25A

Single-Button SIP Video Door Phone

- Tarnish exterior color with aluminum milling technology
- 4M pixel camera featuring 2K x 2K resolution and WDR
- 150°(H) / 150°(V) expanded view angle for superior visibility
- Support NFC, 13.56MHz and 125kHz access cards
- Two-way audio communication over IP networks with echo cancel feature
- Comply with SIP and ONVIF
- Flush-mounted or surface-mounted
- Working temperature: -40°C~+55°C



Akuvox R20A

Compact SIP Video Door Phone

- Premium audio and video quality
- 116° wide-angle 2MP camera with automatic lighting
- Support NFC, 13.56MHz and 125kHz access cards
- Ideal for environments with limited space



Akuvox E18C

7" Face Recognition Door Phone

- Visible light facial recognition
- Dual cameras with anti-spoofing algorithm against photo and video attacks
- 20,000 face capacity & 20,000 card capacity
- Face recognition duration less than 0.2s/user, face recognition accuracy rate greater than 99.5%
- Allow both audio and video communication to an IP phone, mobile client, or softphone
- Multiple verification methods including: face, PIN, cards NFC, BLE and QR codes
- Support stand-alone operation
- Configuration via web browser
- Support 4G module (optional)



Akuvox E16C

Facial Recognition Door Phone

- 5" full-color touch display provides ultra-wide viewing angles
- Visible light facial recognition
- Anti-spoofing algorithm against photos and videos
- Support SIP to provide reliable two-way voice & one-way video communication
- Support multiple verification methods, including the face, card, PIN, Bluetooth, and QR code
- Support stand-alone operation
- Optional body temperature detection function
- Powered by PoE or external power supply



Akuvox E13

Single Button Door Phone

- 2M pixel and 1080P resolution, with WDR feature
- 114°(H)/ 58°(V) expanded view angle for visibility
- Two-way audio communication over IP networks with echo cancel feature
- Comply with SIP & ONVIF
- Flush-mounted & surface-mounted
- IP65 rating for outdoor environment
- Working Temperature: -40°C~+60°C



Akuvox E12

Compact SIP Video Door Phone

- Real-time 2-way talk
- Live camera viewing
- IC card reader & Bluetooth embedded
- Cloud or local based storage
- Rated for outdoor use
- Mobile app compatible
- Integrated with any SIP device



Akuvox E21V

SIP Video Emergency Intercom

- Vandal-resistant with 316-grade stainless steel body
- Premium audio and video quality
- 116° wide-angle 2MP camera with automatic lighting



Akuvox E21A

SIP Emergency Intercom

- Vandal-resistant with 316-grade stainless steel body
- IK10 Rating
- Premium audio quality

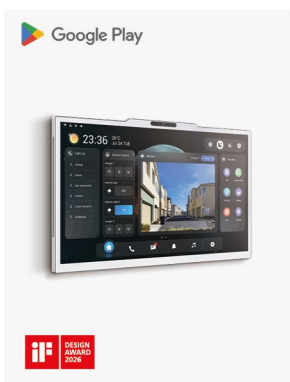


Akuvox E20S

SIP Emergency Intercom

- Vandal-resistant body with a panic button
- IK10 Rating
- Two-way audio communication over IP networks with Echo Cancellation feature
- Support advanced group conference call features
- Powered by PoE
- Comply with SIP standard for easy integration with SIP capable PBXes

Indoor Monitor



Akuvox X937

15.6" Surveillance + Intercom AI Indoor Monitor

- Android 14 OS with Google GMS certification
- Aluminum panel
- 15.6" touch screen with 1920x1080 resolution
- Two-way audio communication
- Built-in 5MP camera
- Built-in AI voice assistant
- Integration with CCTV systems
- Support HDMI input
- Built-in Wi-Fi 6 and Bluetooth feature
- Comply with SIP standard for easy integration with SIP-capable PBXes
- Automatic brightness adjustment
- Powered by PoE+ or external source
- Desk mount available



Akuvox S567

10" Android Indoor Monitor

- Certified by Google GMS
- Built-in Wi-Fi 6 and Bluetooth feature (Optional)
- 5MP camera (Optional)
- Two-way audio communication
- Automatic brightness adjustment
- Built-in smart voice assistant
- Support voice changer
- Comply with SIP standard for easy integration with SIP-capable PBXes
- Powered by PoE or external source
- Support US or European electrical wall box mounting
- White color housing available
- Desk mount available



Akuvox S565

10" Linux Indoor Monitor

- 10" touch screen with 1280x800 resolution
- Stylish industrial design
- Two-way audio communication
- Built-in Wi-Fi 6 (Optional)
- Comply with SIP standard for easy integration with SIP-capable PBXes
- Eight-channel inputs and one built-in relay
- Powered by PoE or external source
- Support US or European electrical wall box mounting
- Desk mount available



Akuvox S563

8" Android Indoor Monitor

- 8" touch screen with 1280x800 resolution
- Stylish industrial design
- Two-way audio communication
- Built-in Wi-Fi 6 (Optional)
- Built-in smart voice assistant
- Support voice changer
- Comply with SIP standard for easy integration with SIP-capable PBXes
- Eight-channel inputs and one built-in relay
- Powered by PoE or external source
- Support US or European electrical wall box mounting
- Desk mount available



Akuvox S563-S

8" Android Indoor Monitor

- 8" touch screen with 1280x800 resolution
- Stylish industrial design
- Two-way audio communication
- Built-in Wi-Fi (Optional)
- Built-in smart voice assistant
- Support voice changer
- Comply with SIP standard for easy integration with SIP-capable PBXes
- Eight-channel inputs and one built-in relay
- Powered by PoE or external source
- Support US or European electrical wall box mounting
- Surface mount



Akuvox S562

7" Linux Indoor Monitor

- 7" touch screen with 1024x600 resolution
- Eight-channel inputs and one built-in relay
- Built-in Wi-Fi 6 feature (Optional)
- Stylish industrial design
- Friendly user interface
- Desk mount available
- AJAX security system integrated



Akuvox S562-V

7" Linux Indoor Monitor

- 7" touch screen with 1024x600 resolution
- Eight-channel inputs and one built-in relay
- Built-in Wi-Fi 6 feature (Optional)
- Stylish industrial design
- Friendly user interface



Akuvox S562-S

7" Linux Indoor Monitor

- 7" touch screen with 1024x600 resolution
- Eight-channel inputs and one built-in relay
- Built-in Wi-Fi 6 feature (Optional)
- Stylish industrial design
- Friendly user interface
- Surface mount available



Akuvox S560

Audio Indoor Answering Unit

- Ergonomic design, comfortable to use, and easy to operate
- Exceptional two-way audio communication
- Easy integration with SIP PBXes
- Powered by PoE or an external power supply
- Support key customization
- Support speed dial and long-press to call preset numbers
- Support one-press call to property managers
- On-wall or desktop mounting options available



Akuvox IT88S

10" Android Indoor Monitor

- 10" capacitive touch screen IPS LCD with 1280 x 800 resolution
- Aluminum alloy front panel
- 1MP camera (optional)
- HD video & audio communication
- Built-in Bluetooth and Wi-Fi feature (optional)
- Built-in offline voice assistant
- Eight-channel inputs and two embedded relays
- Support 3rd-party apps installation
- Built-in SIP PBX function
- Desk mount available



reddot winner 2023



Akuvox IT88P

10" Android Indoor Monitor

- 10" capacitive touch screen IPS LCD with 1920 x 1200 resolution
- Aluminum alloy front panel
- 1MP camera (optional)
- HD video & audio communication
- Built-in Bluetooth and Wi-Fi feature (optional)
- Built-in offline voice assistant
- Eight-channel inputs and two embedded relays
- Support 3rd-party apps installation
- Built-in SIP PBX function
- Desk mount available



Akuvox X933

7" Android Indoor Monitor

- 7" touch screen with 1280 x 800 resolution
- Excellent performance with Android 9.0 OS
- Eight-channel inputs and two built-in relays
- Dual-microphone for noise reduction
- Support 3rd-party apps
- White color housing available
- In-wall mounting version available



Akuvox C319

10" Android Indoor Monitor

- 10" capacitive touch screen IPS LCD with 1280 x 800 resolution
- 1MP camera (optional)
- HD video & audio communication
- Built-in Bluetooth and Wi-Fi feature (optional)
- Built-in offline voice assistant
- Eight channel inputs and two embedded relays
- Support 3rd-party apps installation
- Support RF433/RF869 and Akuvox EP10 (optional)
- Built-in SIP PBX function
- Desk mount available



Akuvox C316

7" Android Indoor Monitor

- 7" touch screen with 1024 x 600 resolution
- Two-way audio communication
- Built-in Wi-Fi (optional)
- Comply with SIP standard for easy integration with SIP-capable PBXes
- Eight-channel inputs and one built-in relay
- Powered by PoE or external source
- Support US or European electrical wall box mounting
- Desk mount available



Akuvox C313

Budget-friendly Indoor Monitor

- 7" touch screen with 1024 x 600 resolution
- Eight-channel inputs and one built-in relay
- White color housing available

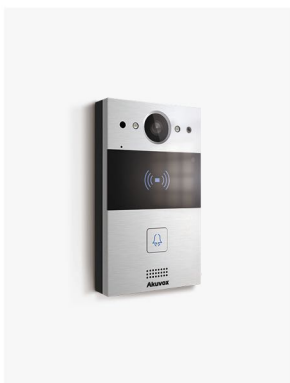
2-Wire Intercom



Akuvox R20K-2

2-Wire SIP Video Door Phone

- Two-pin wire for power supply and network access
- Wide-angle camera: 110° (H), 58° (V)
- IC/ID card reader & keypad embedded
- Two-way audio communication over IP networks with Echo Cancellation & noise suppression
- H.264 video compression



Akuvox R20A-2

2-Wire SIP Video Door Phone

- Vandal-resistant body, with a flush button
- Two-pin wire for power supply and network access
- Wide-angle camera: 110° (H), 58° (V)
- IC/ID card reader embedded
- Two-way audio communication over IP networks with echo cancellation & noise suppression
- H.264 video compression



Akuvox E12S-2

2-Wire Single Button Door Phone

- Single button for outdoor environment
- Two-pin wire for power supply and network access
- Wide-angle camera: 123° (H), 69° (V)
- IC card reader & Bluetooth embedded
- Two-way audio communication over IP networks with echo cancellation feature
- Comply with SIP & ONVIF



Akuvox S562W-2

2-Wire SIP Indoor Monitor

- 7" touch screen with 1024x600 resolution
- Eight-channel inputs and one built-in relay
- Built-in Wi-Fi 6 feature
- Stylish industrial design
- Friendly user interface
- Support 2-wire connection



Akuvox C313W-2

2-Wire SIP Indoor Monitor

- 7" touch screen with 800 x 480 resolution
- Eight-channel inputs and one built-in relay
- White color housing available
- Support 2-wire connection



Akuvox NS-2

2-Wire IP Network Switch

- Connect up to six 2-wire IP intercom devices
- Support network and power supply for R20A-2 or C313W-2 through 2-wire cable
- Support multi-level cascade through 2-wire cable
- Long data transmission distance



Akuvox 2-Wire Adaptor Kit

Ethernet to 2-Wire Adaptor Kit

- Support PoE input and output
- Long transmission distance via 2-wire cable
- Powered by PoE



Akuvox NC-2

Ethernet to 2-Wire Adaptor

- Support PoE Output
- Long transmission distance via 2-wire cable
- Support for paired use or use with Akuvox NS-2
- Powered by 48VDC unit or NS-2



Akuvox NX-2

Ethernet to 2-Wire Adaptor

- Supports PoE input
- Long transmission distance via 2-wire cable
- Support paired use with Akuvox NC-2
- Powered by PoE



Akuvox C313W-LP-2

2-Wire SIP Indoor Monitor

- Support 2-wire transmission
- 7" touch screen
- Powered by Akuvox NS-LP-2 or external source
- Support Wi-Fi
- Low power consumption
- Low screen brightness and fast sleep time



Akuvox NS-LP-2

2-Wire IP Network Switch

- Support multi-level cascade
 - 6 pairs of 2-wire port
 - Super long transmission distance
 - Powered by 48VDC or 24VDC
 - Rail mounting installation
- Low-power design to meet special wiring requirement



Akuvox R49G

Android IP Video Phone

- 7" touch screen with 1024 x 600 resolution
- Excellent performance with Android 9.0 OS
- Premium audio and video quality
- DTMF for remote door opening
- 2MP camera with privacy shutter
- Built-in Bluetooth, USB, and Wi-Fi
- Support 3rd-party apps

Access Control



Akuvox A095

4 Door Controller

- Plastic cover
- 8 port interfaces for relay out
- 8 port interfaces for Wiegand/RS485 readers
- 12 port interfaces for input
- Wi-Fi 6
- LTE (optional)
- User Capacity: 100,000
- Access Log: 200,000



Akuvox A094S

4 Door Controller

- Support 4 port interfaces for Wiegand readers
- Support 13 port interfaces for input
- Support 8 port interfaces for relay out
- Backlit function icons
- Support backup battery (battery not supplied)
- Support RS485 and Wiegand protocols
- Support tamper-proof alarm
- Support up to 50,000 cards and 100,000 card event logs



Akuvox EC33

Elevator Access Controller

- Support 32 outputs with further expansion to 64 outputs
- Support up to 20,000 cards and 100,000 card event logs
- Support Wiegand 26/34
- Compatible with Akuvox intercoms and access control terminals
- Support remote control via Akuvox Cloud



Akuvox EC33P

Elevator Access Controller

- 32-channel elevator control
- 10/100M Ethernet
- Large storage up to 20,000 cards and 100,000 logs
- RS485 port
- Fire alarm input
- Work with Akuvox SmartPlus



Akuvox A08S

Mullion Size Access Control Terminal

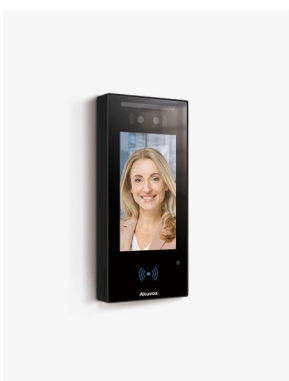
- Touch keypad
- QR code scanner
- Aluminum alloy panel
- Support multiple access control methods: PIN, NFC, 13.56MHz and 125kHz access cards, Bluetooth, and QR code
- Built-in HID® Proximity or iClass® Module (optional)
- APIs available for easy integration with 3rd-party systems
- Support tamper-proof alarm
- Support up to 20,000 cards and 100,000 card event logs
- BLE 5.0
- Support OSDP & Wiegand protocol
- Ideal for environments with limited space



Akuvox A08K

Mullion Size Access Control Terminal

- Touch keypad
- Aluminum alloy panel
- Support multiple access control methods: PIN, NFC, 13.56MHz and 125kHz access cards
- APIs available for easy integration with 3rd-party systems
- Support tamper-proof alarm
- Support up to 20,000 cards and 100,000 card event logs
- Support OSDP & Wiegand protocol
- Ideal for environments with limited space



Akuvox A05

Facial Recognition Access Control Terminal

- 5" full-color display provides ultra-wide viewing angles
- Visible light facial recognition
- Anti-spoofing algorithm against photos and videos
- Support multiple verification methods, including the face, card, and QR code
- Support stand-alone operation
- Optional body temperature detection function
- Powered by PoE or external power supply



Akuvox A03S

Access Control Terminal

- Toughened glass & aluminum alloy panel
- 13.56MHz & 125kHz RFID card reader & NFC
- Small and exquisite, suitable for installation in narrow spaces
- APIs available for easy integration with 3rd-party systems
- Support tamper-proof alarm
- Support up to 20,000 cards and 100,000 card event logs
- BLE 5.0



Akuvox A02S

Access Control Terminal

- Touch keypad
- Aluminum alloy panel
- Support multiple access control methods: PIN codes, NFC, 13.56MHz and 125kHz access cards, and two-factor authentication
- APIs available for easy integration with 3rd-party systems
- Support tamper-proof alarm
- Support up to 20,000 cards and 100,000 card event logs
- Ideal for environments with limited space



Akuvox A01S

Access Control Terminal

- Toughened glass & aluminum alloy panel
- Support multiple access control methods: NFC, 13.56MHz and 125kHz access cards
- APIs available for easy integration with 3rd-party systems
- Support tamper-proof alarm
- Support up to 20,000 cards and 100,000 card event logs
- Ideal for environments with limited space



Akuvox ACR-CRP12

UHF Card Reader

- UHF identification distance: Up to 15m
- Operating voltage: DC 9 - 15V
- Current: Standby current less than 1A, card-swipe current less than 3A
- Communication interfaces: Wiegand, USB
- Buzzer: 1
- Operating frequency: 902~928MHz (American standard); 865~868MHz (European standard)
- Indicator light: Red/Yellow/Green/Blue/Cyan/Purple/White
- Frame: Plastic
- Color: Body white
- Size: 308.5 x 308.5 x 67.5 mm
- IP rating: IP66



Akuvox ACR-CID12

Desktop Card Reader

- Power by USB (5VDC)
- USB: 1 (Power supply/Data transmission)
- Current: Standby current less than 80mA, card-swipe current less than 200mA
- Buzzer: 1
- Operating frequency: 902~928MHz (American standard), 865~868MHz (European standard)
- Frame: Plastic
- Size: 107 x 107 x 23 mm



Akuvox ACR-CID01

Desktop Card Reader

- Frame: Plastic
- Color: Black
- Size: 66.8 x 104.7 x 12.1 (mm)
- Weight: 56g
- Indicator Light: Blue/Green
- Power by USB (5VDC,0.5A)
- USB: 1 (Power Supply/Data Transmission)
- Buzzer: 1



Akuvox UHF-TAG11

UHF Card

- UHF identification distance: Up to 15m
- Base material: PET
- Chip: NXP/U CODE 8
- Size: 110 x 45 mm
- Operating frequency: 860~960MHZ



Akuvox Bkey

Bluetooth Access Card

- Frame: Plastic
- Color: Black
- Size: 31 x 52.5 x 11.36 (mm)
- Weight: 7g
- Key ring hole
- Button: 1 push button
- Indicator Light: Red/Blue
- Power by battery CR2032



Akuvox SR01

Security Relay

- Ultra-compact form
- Indoor installation
- Encrypted data communication
- Easily placed in most standard installation boxes



Akuvox IP Video Intercom Kit

On-premise All-In-One Management System

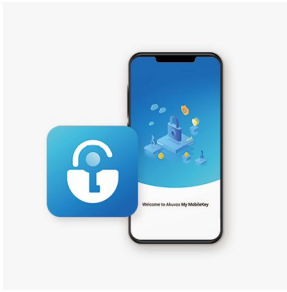
- Fit for large and small projects
- Door unlocking from anywhere
- Flexible door entry methods
- Convenient house calls
- Plug and play
- Easy installation with Wi-Fi



Akuvox 2-Wire IP Video Intercom Kit

On-premise All-In-One Management System

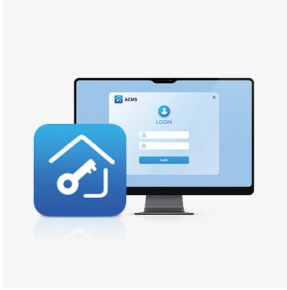
- Fit for large and small projects
- Door unlocking from anywhere
- Flexible door entry methods
- Convenient house calls
- Plug and play
- Easy installation with Wi-Fi



Akuvox My MobileKey

Bluetooth Mobile Credential

- Support wave-to-unlock feature
- Support door opening using the unlocking tab of the app
- Bluetooth credential secured by the AES256 encryption protocol
- Integration with the Akuvox ACMS
- Available for Android & IOS version



Akuvox ACMS

PC-based Access Control Management System for Small and Medium Businesses

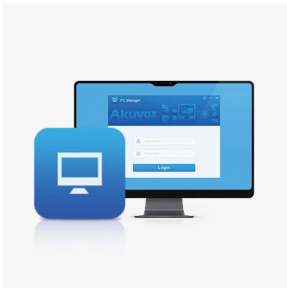
- Staff information management
- Device management
- Access control management
- Access to detailed access logs



Akuvox SDMC

On-premise Software for Community-wide Intercom System Management

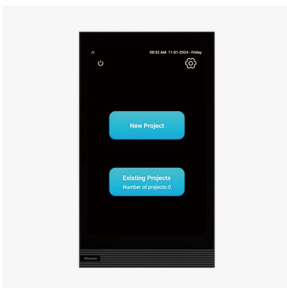
- Batch deployment of devices automatically
- Real-time video monitoring
- Access control management
- Messaging and ad pushing



Akuvox PC Manager

PC-based Management Software for Intercom Configuration

- Automatic search and connection of intercom devices
- Addition, modification, and deletion of intercom configuration
- Batch intercom configuration and software upgrading



Akuvox Installer Kit Tool

Streamlined Installation Assistant Tool

- Automatically detect and organize device data across the site
- Compile all project data onsite and upload it to the cloud with a single tap
- Adjust device settings like network or relay configurations directly



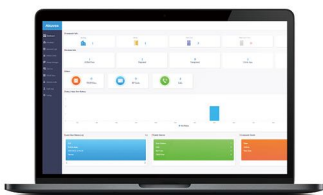
Akuvox SmartPlus Residential

Smart Cloud-based Intercom Service for Residential Buildings



SmartPlus App

The SmartPlus App allows residents to see and talk to visitors, open doors, monitor building entrances and issue virtual keys from their smartphones, which offers an elevated building entry experience.



Property Management Portal

The web-based property access management portal of Akuvox SmartPlus offers a bunch of remote-working features that greatly enhance building operation efficiency.



Secure, Tech-forward, Scalable Cloud Access Control for Modern SMBs

- Access control and smart intercom integrated into one unified platform
- Curb-appealing award-winning designs for a positive first impression
- Quick installation and hassle-free configuration, minimizing operational disruption
- High system openness for easy 3rd-party integration to enhance security
- Stringent data protection across devices, apps, and management platform

Akuvox

Open A Smart World



Web: www.akuvox.com

Email: sales@akuvox.com

Tel: +86-592-2133061 Ext:7527